



BLUEWIN

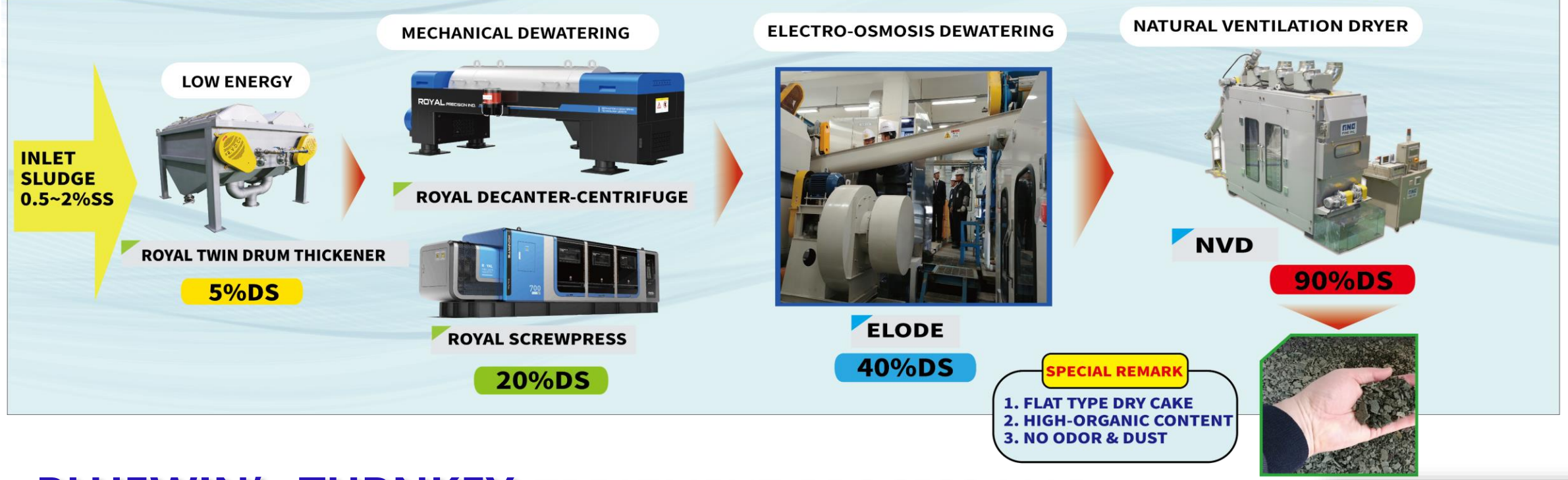
ROYAL
ROYAL PRECISION INDUSTRY CO., LTD.



DECANTER CENTRIFUGE

TOTAL SOLUTION FOR SLUDGE TREATMENT (REDUCTION & RENEWABLE)

- * 35YEARS ACCUMULATED KNOW-HOW
- * 90%DS GUARANTEE WITH LOWEST CAPEX & OPEX
- * ADVANCED TECHNOLOGIES FOR MECHANICAL & ELECTRO-OSMOSIS SYSTEM



BLUEWIN's TURNKEY TREATMENT PROCESS MAP

About Royal Precision



ROYAL PRECISION IND CO., LTD. is a leading company of sludge dewatering equipment manufacturing. Since established in 1986, we have continued to grow and develop based on the high level of technology and the best quality of equipment by accumulated know-how.

We have supplied our advanced equipment to the national infrastructure and various environmental industry-related plants abroad. Currently, over 3,000 machines are operated at 1,000 wastewater treatment sites. We have 70% market share of decanter-centrifuges in Republic of Korea.

Now, we are doing our best to become a global leading environmental company by starting from the markets such as the United States, Europe, and the Middle East.

What is the feature of Royal Precision?

- 35years Accumulated Field Experiences for Performance & Safety
- Over 3,000 units, 1,000 work-sites References
- Made in Korea by Professional Engineers with the best manufacturing skills

**1) Main Factory
(DAEGU-CITY)**



**2) NEW Factory
2020 Installed
(DAEGU-CITY)**



**3) Bluewin Co., Ltd.
Overseas Marketing
(SEOUL-CITY)**





Decanter-Centrifuge

KOWATS-D Line

- High-capacity Centrifugal Dehydrator
- Low-energy consumption with the best performance
- Suitable for sludge treatment with high-speed & Safety
- Green Technology of LV Motor & Large volume machine



■ Specification

Model	Capacity (m ³ /hr)	Main Motor (kw)	Centrifugal force(G)	Dimension(mm)			Weight (kg)
				L	W	H	
KOWATS-270 D	1~5	7.5~11	2000~2500	2820	800	1010	2500
KOWATS-360 D	5~10	15~22	2000~2500	3340	1000	1180	3000
KOWATS-420 D	10~20	30~37	2000~2500	3920	1050	1320	3500
KOWATS-450 D	20~25	45~55	2000~2500	4060	1100	1340	4000
KOWATS-500 D	25~30	45~55	2000~2500	4500	1150	1390	4500
KOWATS-550 D	30~35	55~75	2000~2500	4030	2250	1150	5200
KOWATS-610 D	35~45	75~90	2000~2500	4245	2300	1180	6800
KOWATS-650 D	45~50	75~90	2000~2500	4600	2400	1200	7200
KOWATS-720 D	50~65	90~110	2000~2500	5015	2600	1670	8000

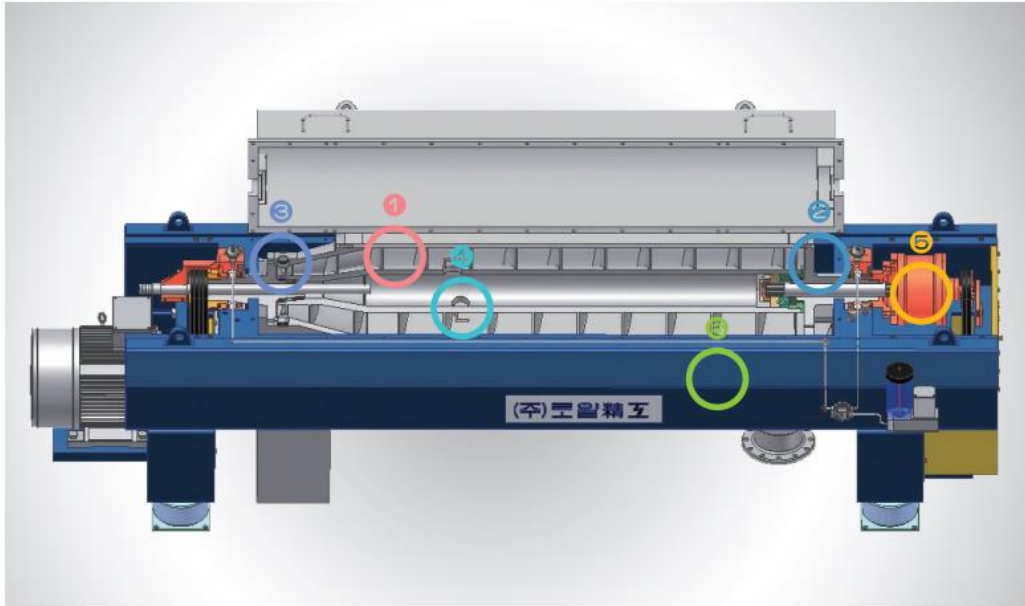
Input 2% TS, Activated Municipal sludge



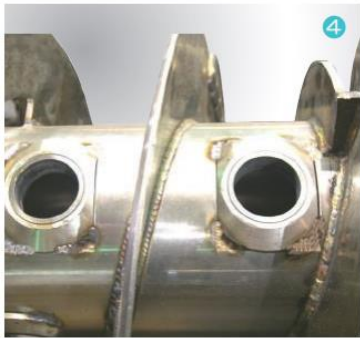
Quality Certificate

Main Certification

- (1) ISO 9001 Quality Certification
- (2) ISO 14001 Environmental Certification
- (3) CE Certification



● **Patent NO. 10-0920493**
The screw decanter centrifuge including for noise prevention plate installation in the body of rotation of the single bowl



● **Patent NO. 0340190**
The screw decanter centrifuge including The increasing, reducing speed gearbox equipment for double acceleration centrifuge

● **Patent NO. 10-0953671**
The concentrate or having the rotation angle the screw decanter centrifuge equipped with the cake outlet

● **Patent NO. 0407896**
The sludge concentration for dehydrating horizontal decanter centrifuge



● **Patent NO. 10-0857057**
The hardening method for the wing tip of the sewage and for waste water treatment centrifuge screw conveyor

● **Patent NO. 10-0977196**
The screw decanter centrifuge equipped with the double acceleration discharge cover formed in the screw conveyor





Representative References



- 1,000 Regular customers
- 2,000 End-user customers
- 3,000 Units operating in Korea & Overseas WTP, WWTP
- Customer Center in U.S, Europe, Middle East market
- Solid trust from Worldwide Customers



ROYAL

ROYAL PRECISION INDUSTRY CO., LTD.

#6, Seongseogongdan-ro 25-gil, Dalseo-gu, Daegu, Republic of Korea (42705)

Phone : +82.70.7868.8920 Email : overseas@korearoyal.com

BLUEWIN Co., Ltd.

<Seoul Office for Overseas Marketing>

4F, #157, Jeongneung-ro, Seongbuk-gu, Seoul, Republic of Korea (02708)

find more on www.korearoyal.com / www.bluewin.kr

